

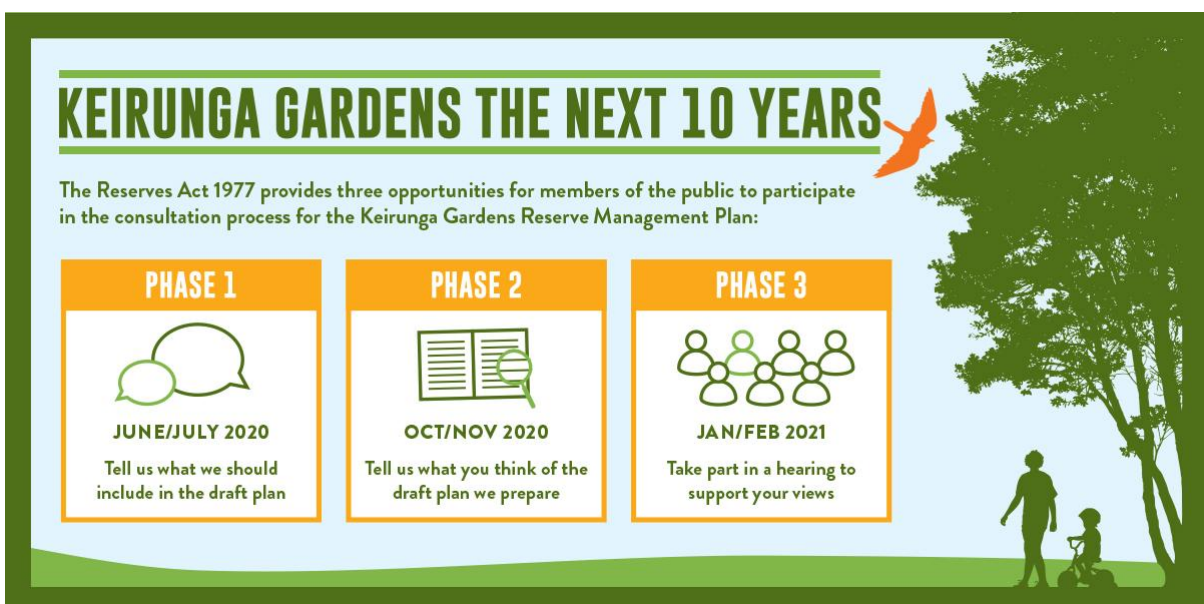
[View this email in your browser](#)



Kia ora

## Reserve Management Plan Feedback Phase 1

We are thrilled with the amazing community response to our first engagement, with over 200 surveys and feedback completed and received. Thank you very much to all those who took the time to get in touch with us. We will now spend the next couple of months reviewing everything received and considering all your ideas and suggestions for inclusion in the Draft Reserve Management Plan. We hope to have this Draft Plan completed and available for formal comment and submissions towards the end of the year. Everyone who completed a survey or provided feedback will be personally informed when this Draft Plan is available for comment.



## KEIRUNGA GARDENS THE NEXT 10 YEARS

The Reserves Act 1977 provides three opportunities for members of the public to participate in the consultation process for the Keirunga Gardens Reserve Management Plan:

### PHASE 1



JUNE/JULY 2020

Tell us what we should include in the draft plan

### PHASE 2



OCT/NOV 2020

Tell us what you think of the draft plan we prepare

### PHASE 3



JAN/FEB 2021

Take part in a hearing to support your views

We have commissioned a Conservation Plan for the two heritage buildings in Keirunga Gardens: the Homestead and Cottage. The Conservation Plan will guide the ongoing protection and care of these historic places. If you have any historical photographs of these buildings or their gardens, we would appreciate copies of these being sent to [Alex Mabin](#) with any supporting information. If these photos are used in the public domain they will be attributed to their owner.

## Keirunga Gardens Care Group

We are fortunate to have a community care group in place for Keirunga Gardens. The group was established in 2019 to look after community interests in the park, with an emphasis on the woodland area along Arthur's Path. The Keirunga Gardens Care Group will carry out plantings across the park as highlighted through the RMP process. If you are interested in finding out more about the group, please contact [Johno Ormond](#) directly.

Thank you for your continued support of and interest in Keirunga Gardens. We will be in touch again later in the year as we progress through the next steps of the RMP process.

**Please do not email me again**

---

*Copyright © Hastings District Council, All rights reserved.*

**Our mailing address is:** [customerservice@hdc.govt.nz](mailto:customerservice@hdc.govt.nz)

Want to change how you receive these emails?  
You can update your preferences or unsubscribe from this list